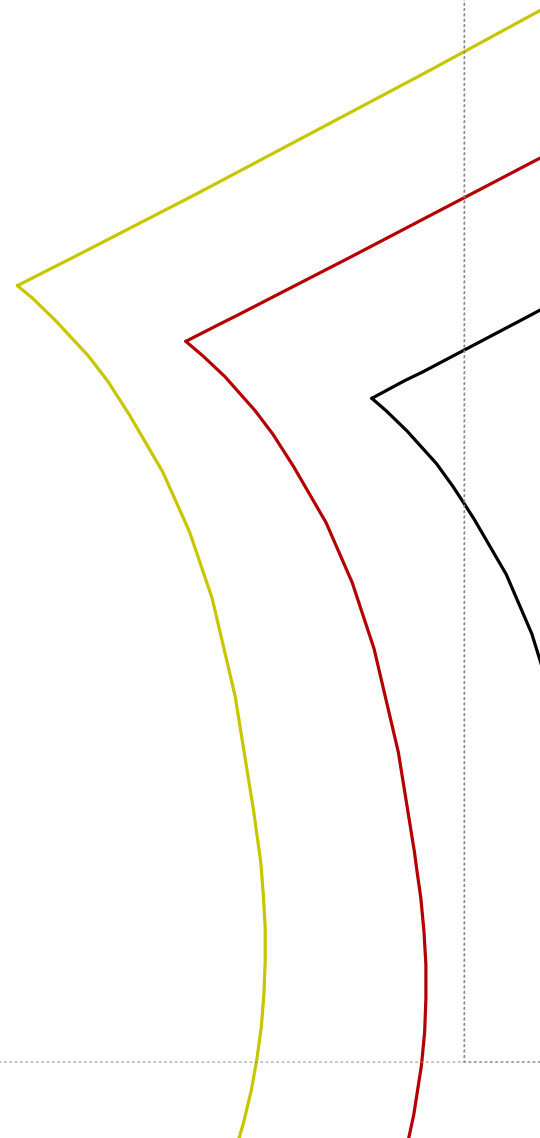
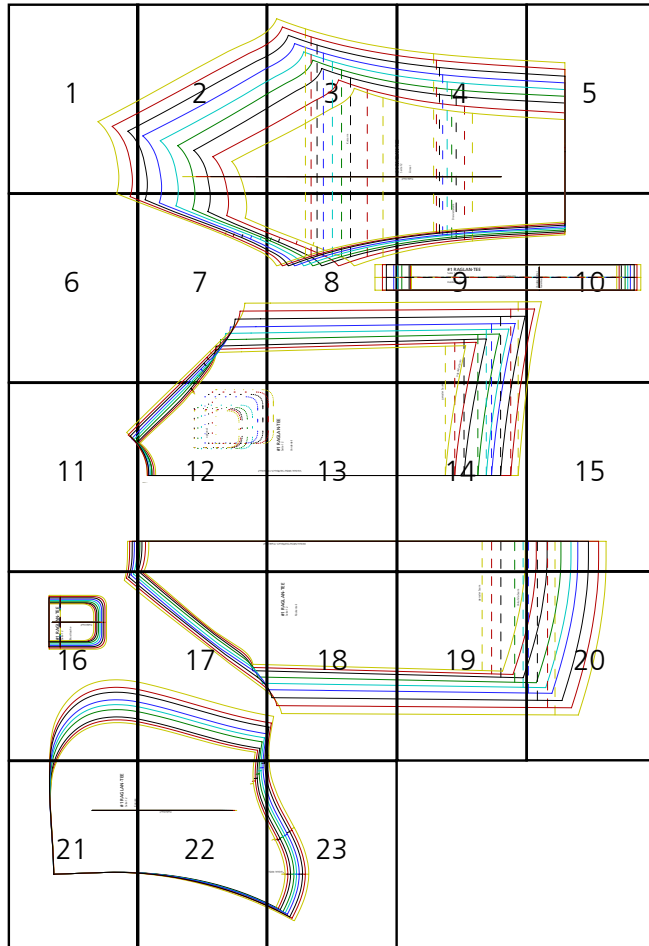


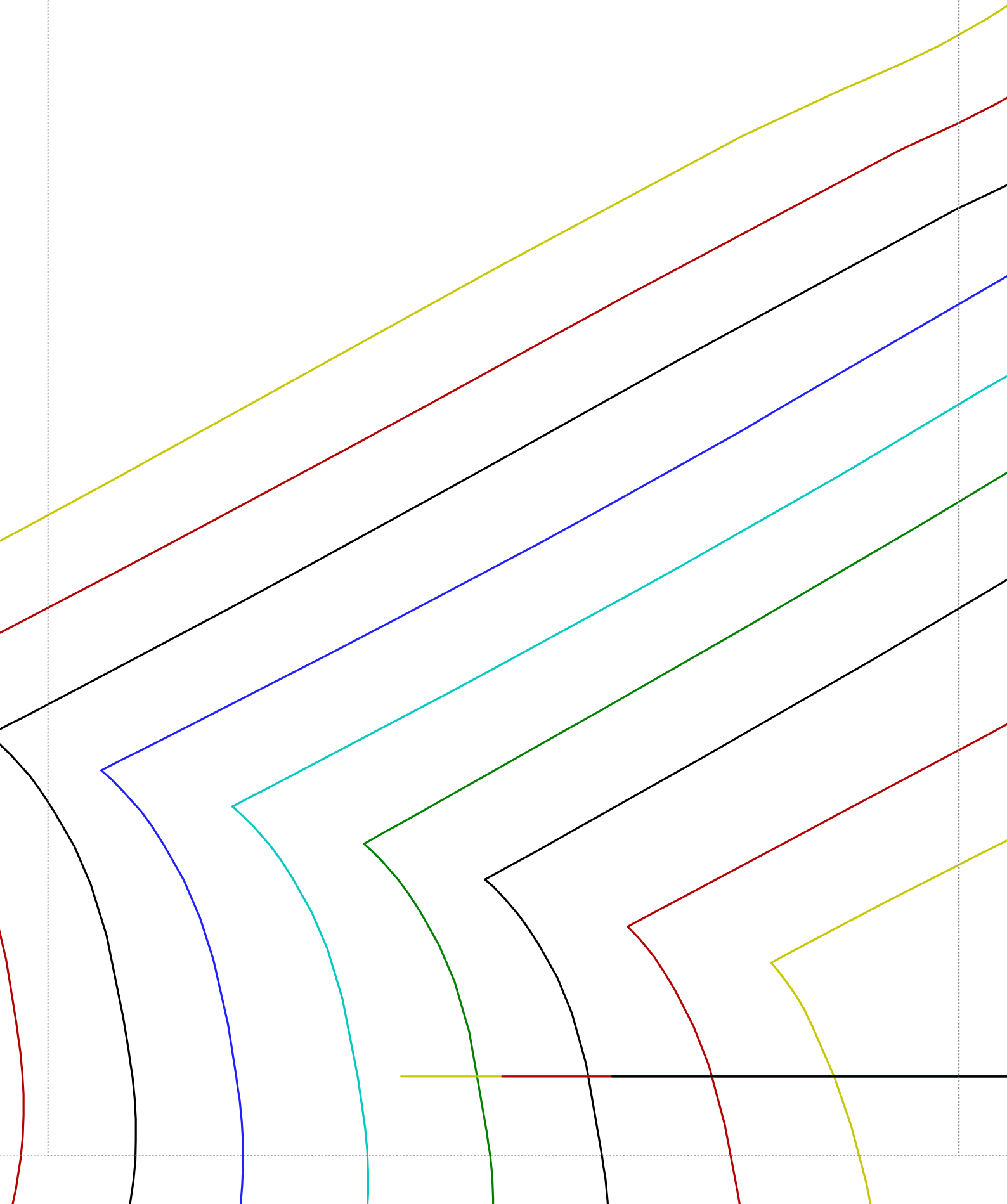
1

Schnittmuster ohne Grössenanpassung, d.h. in tatsächlicher Grösse, ausdrucken.

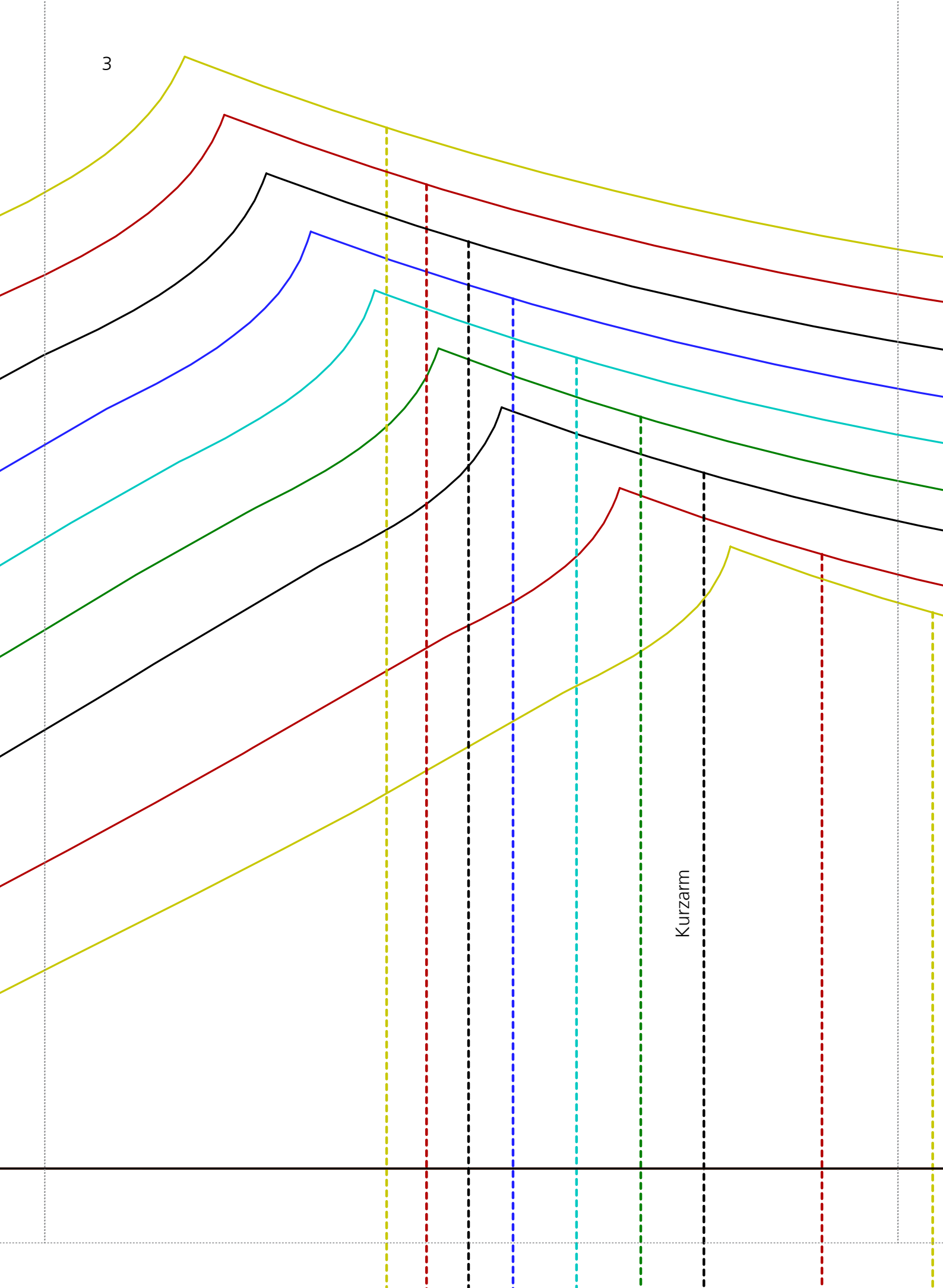
Grösse anhand des Kontrollquadrates auf Seite 23 kontrollieren.

Entlang der gestrichelten Linien zusammenkleben gemäss Legeplan.





3



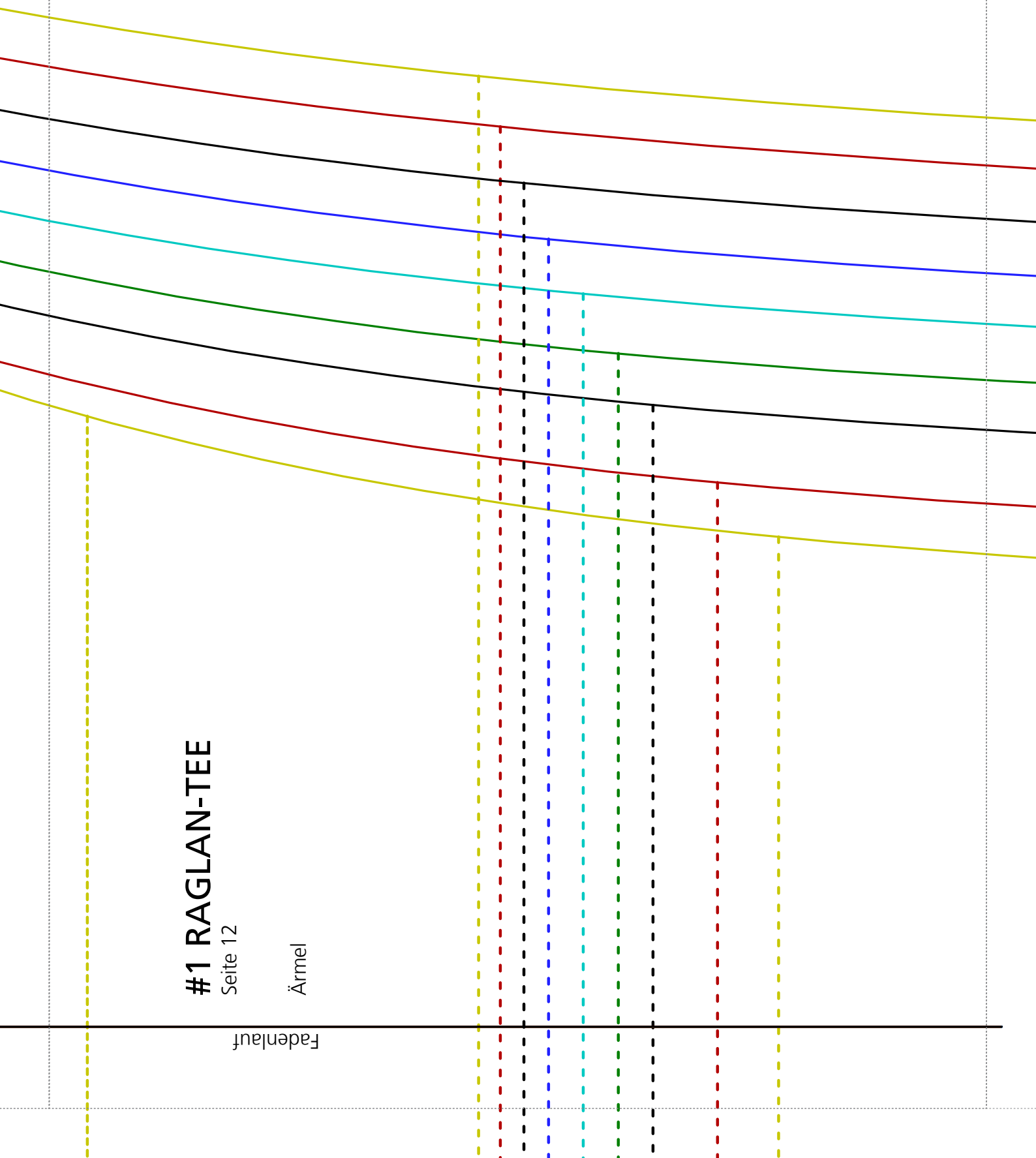
Kurzarms

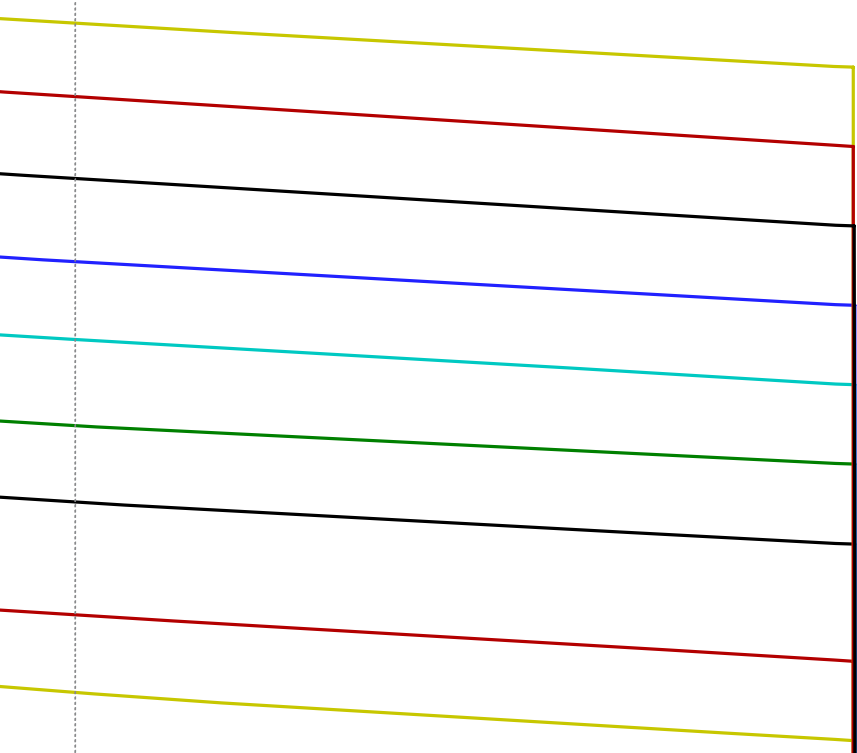
#1 RAGLAN-TEE

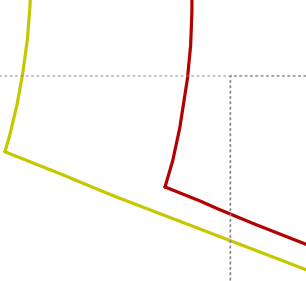
Seite 12

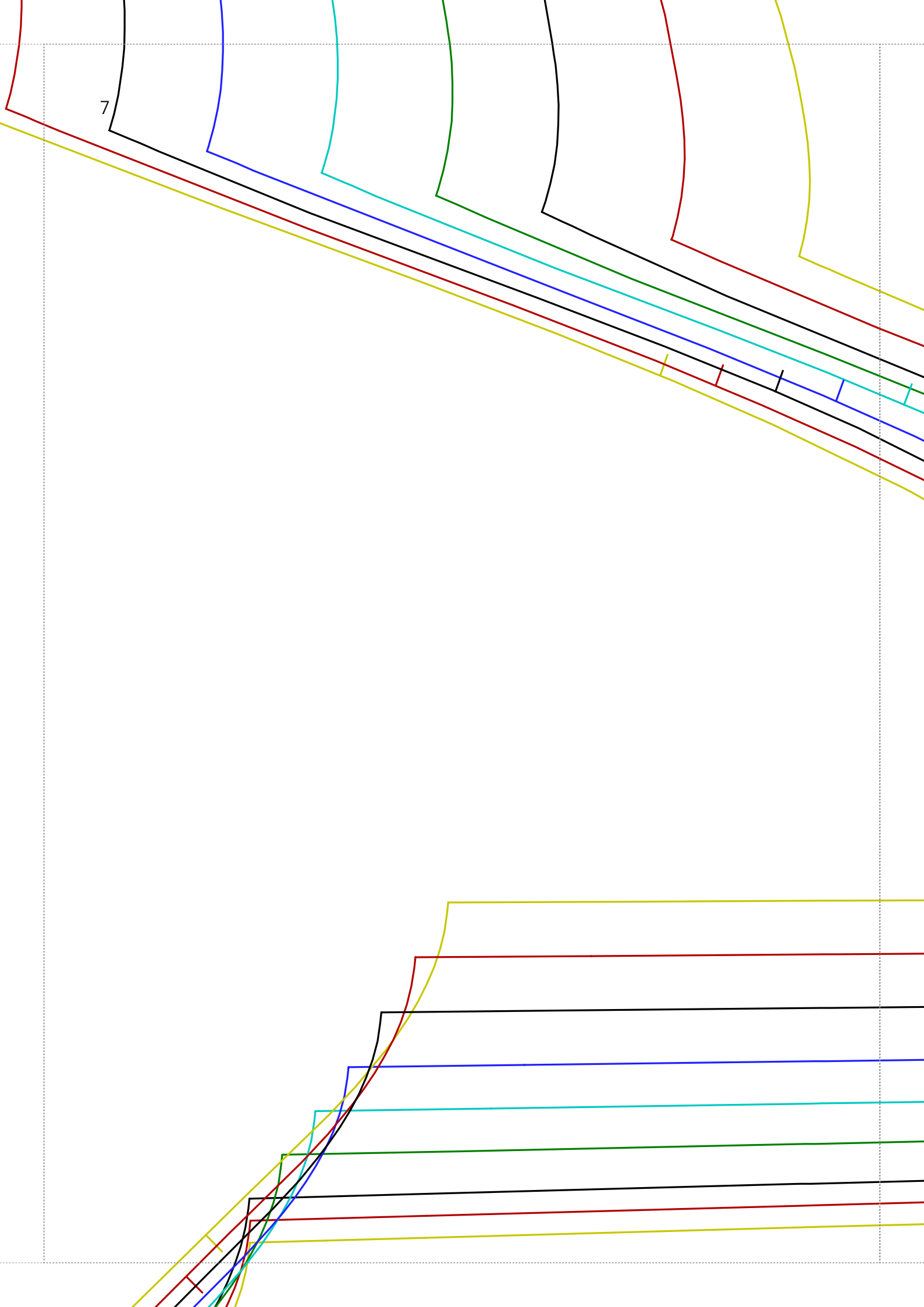
Ärmel

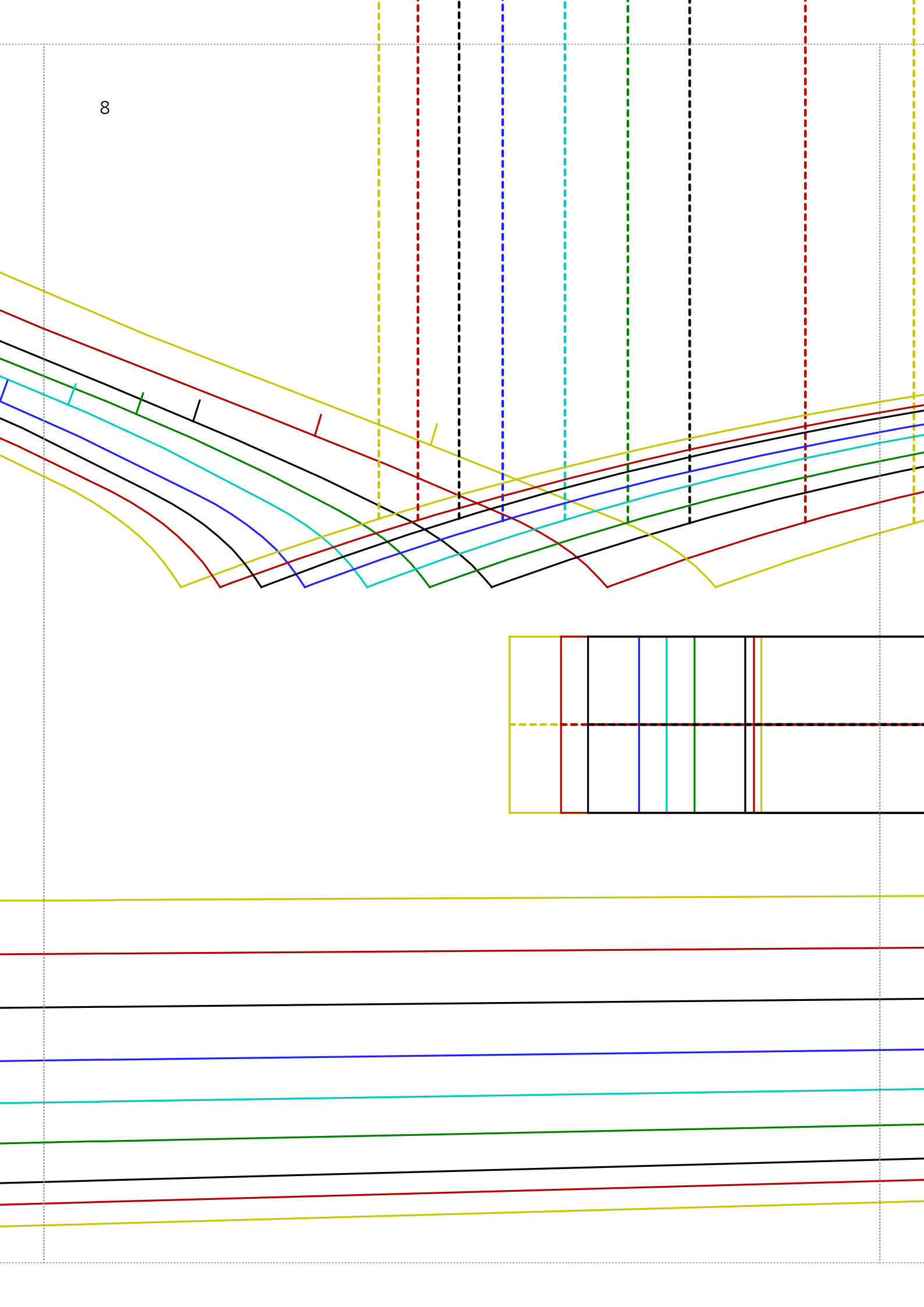
Fadenlauf











9

Dreiviertelarm

#1 RAGLAN-TEE

Seite 1 2

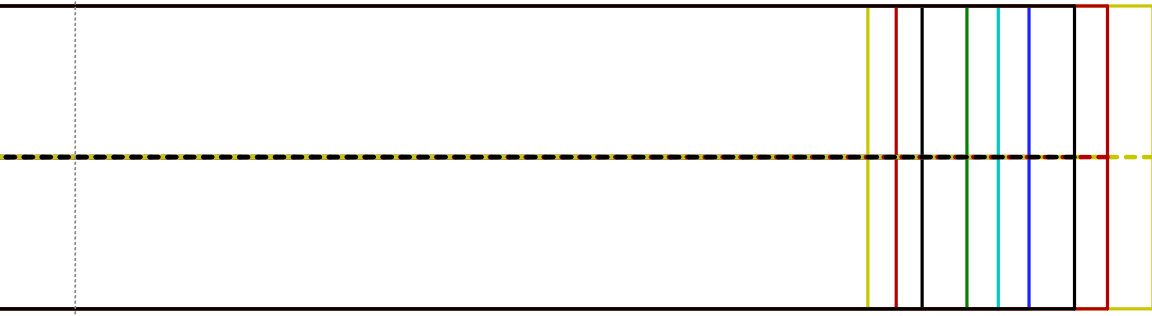
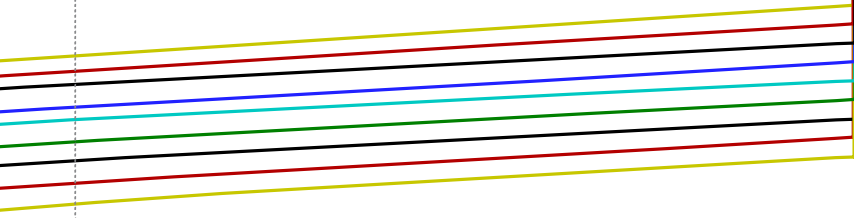
Umbruchkante

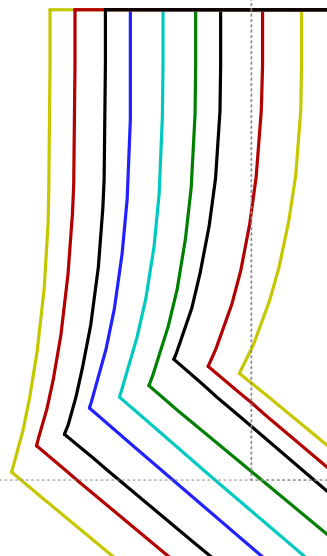
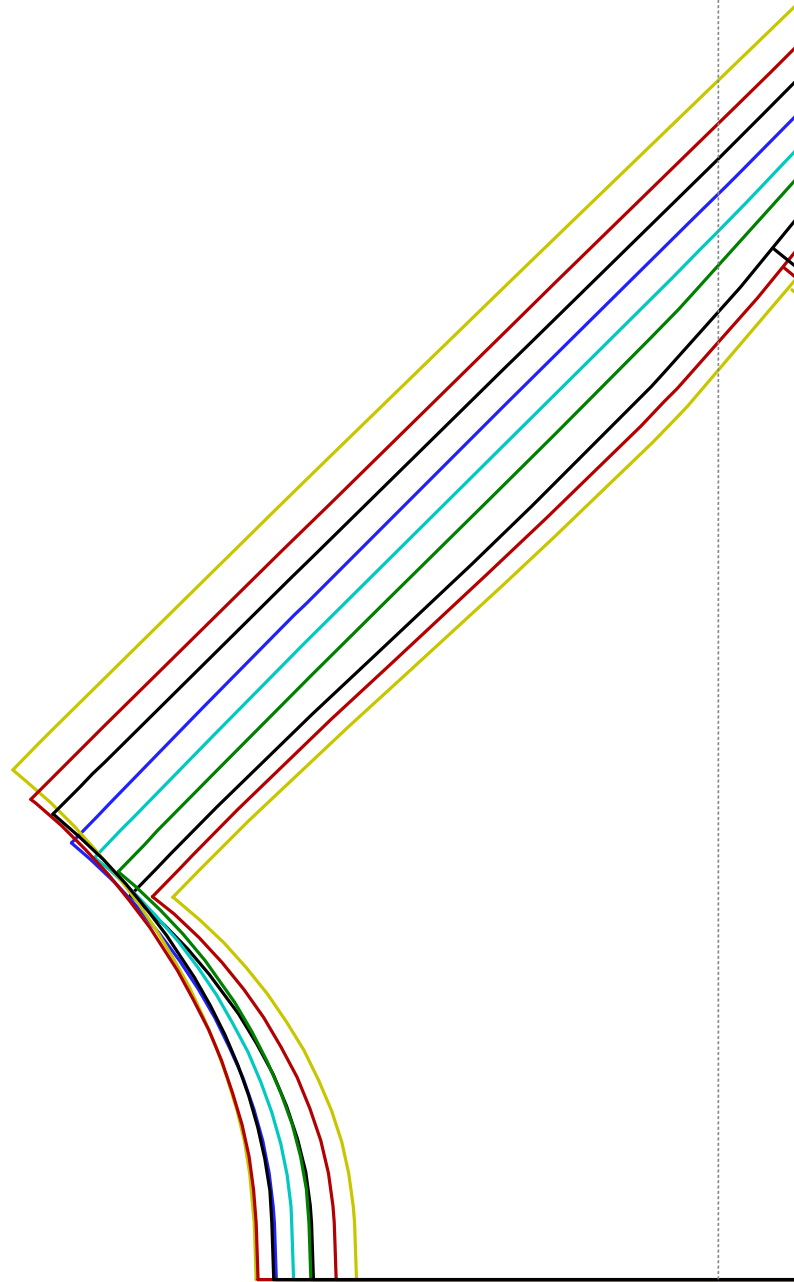
Halsbündchen

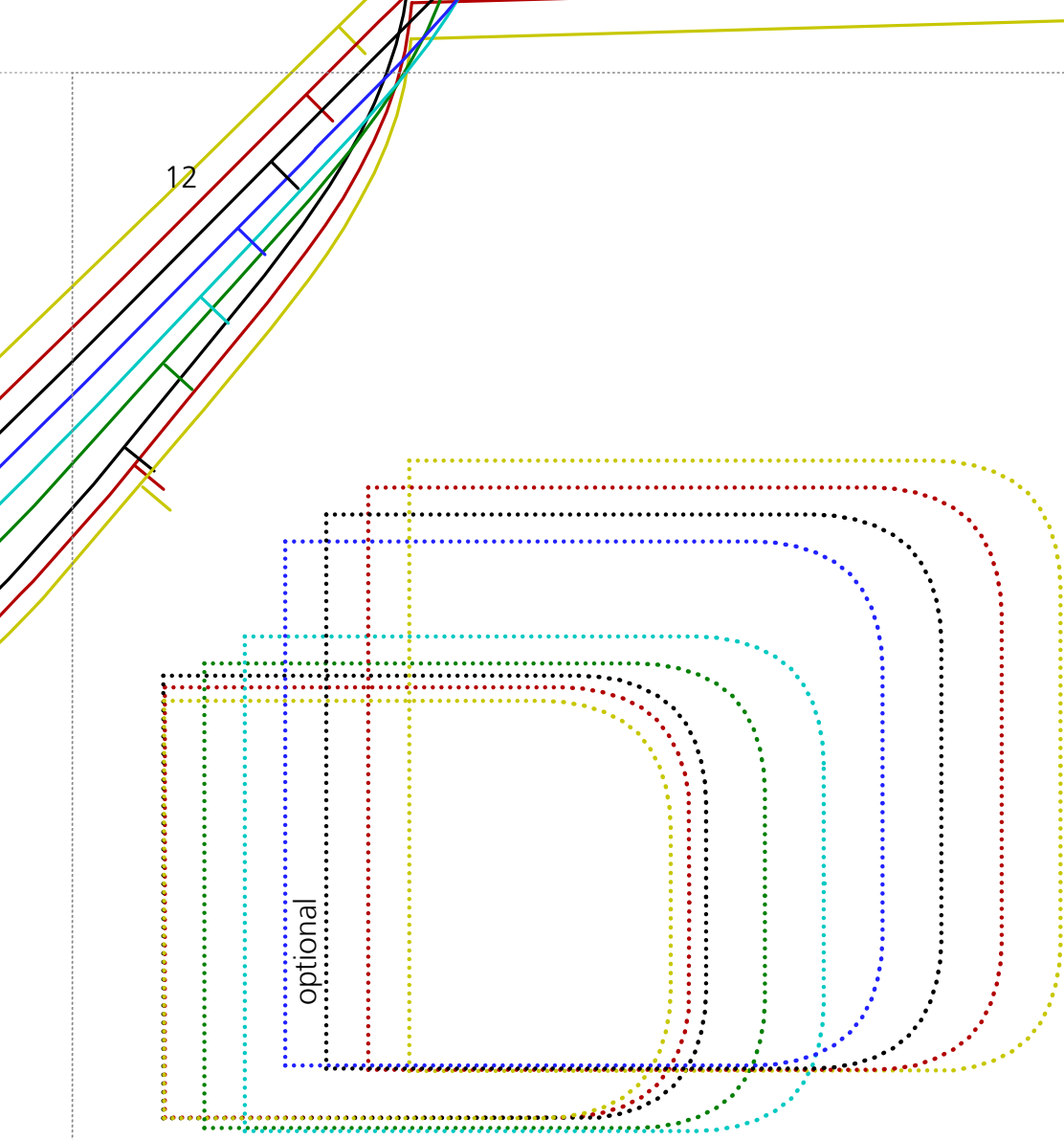
Vordere Mitte/
Fadenlauf

m

10







Vordere Mitte/ Stoffbruch / Fadenlauf

#1 RAGLAN-TEE

Seite 12

Vorderteil

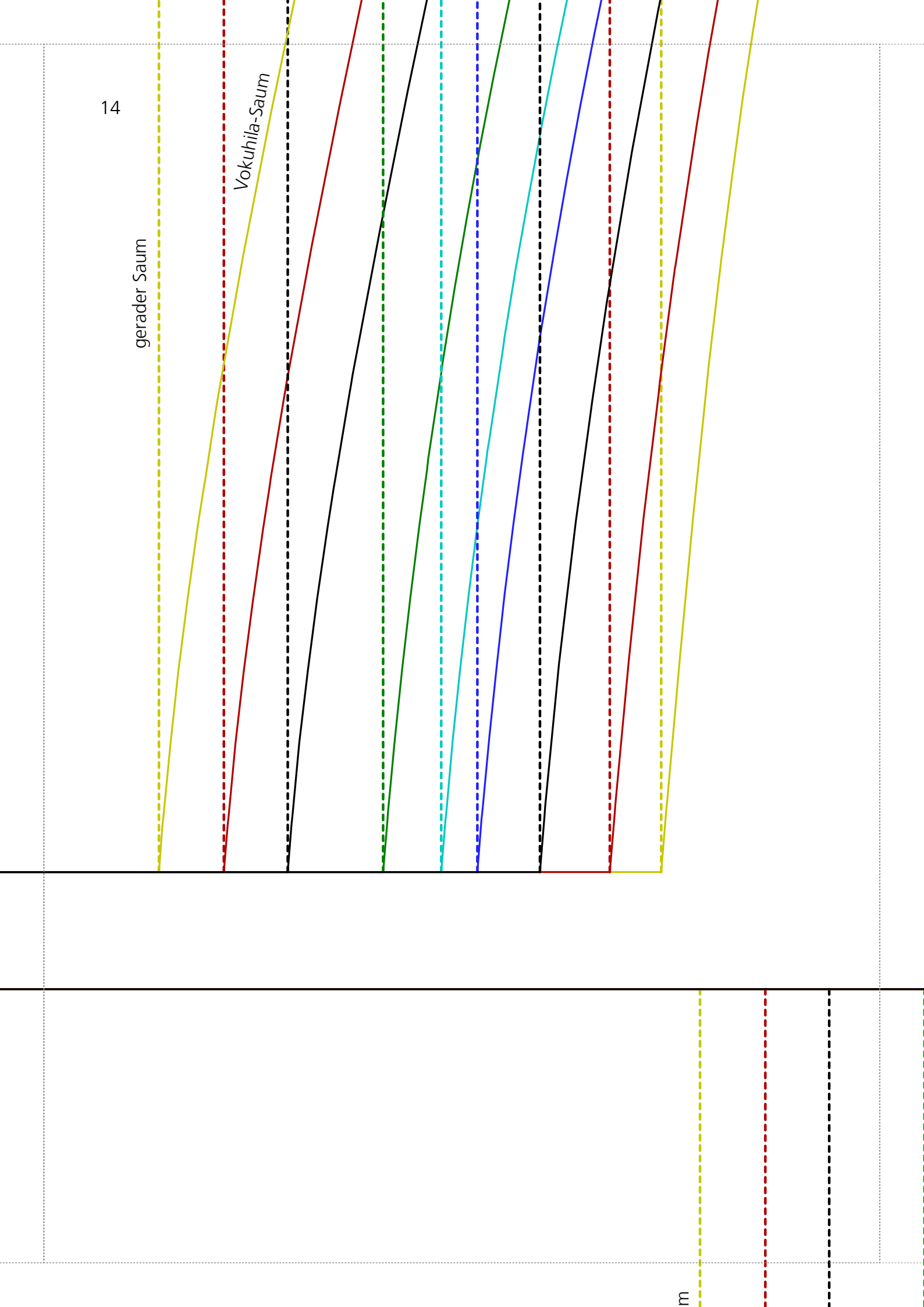
Fadenlauf

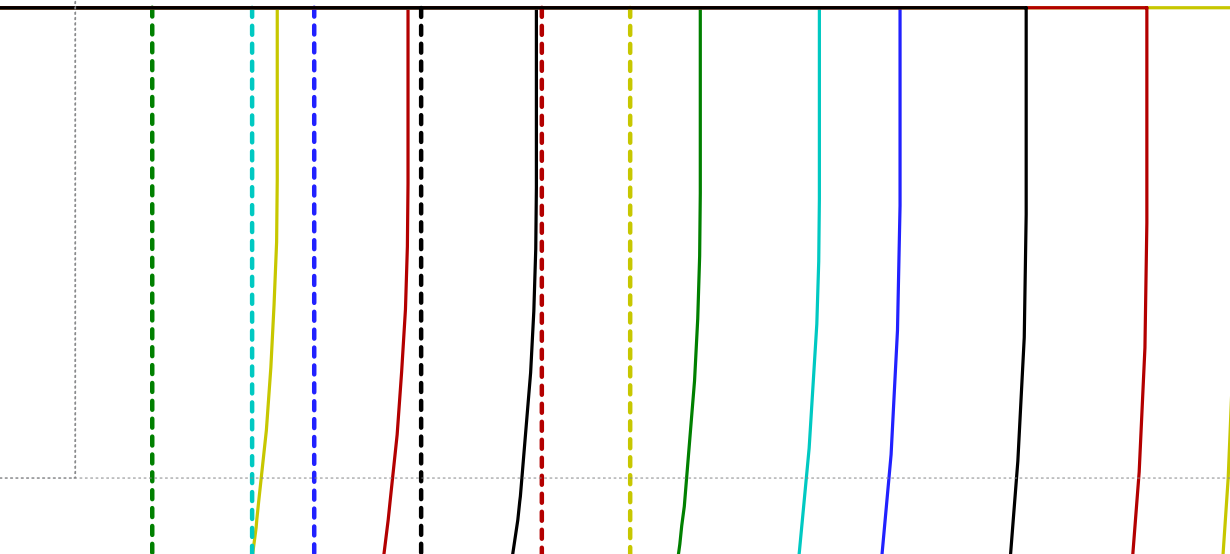
14

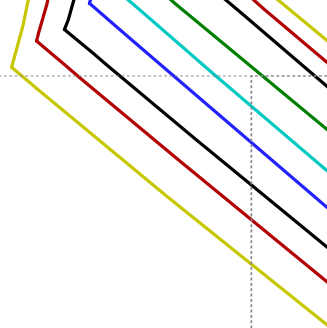
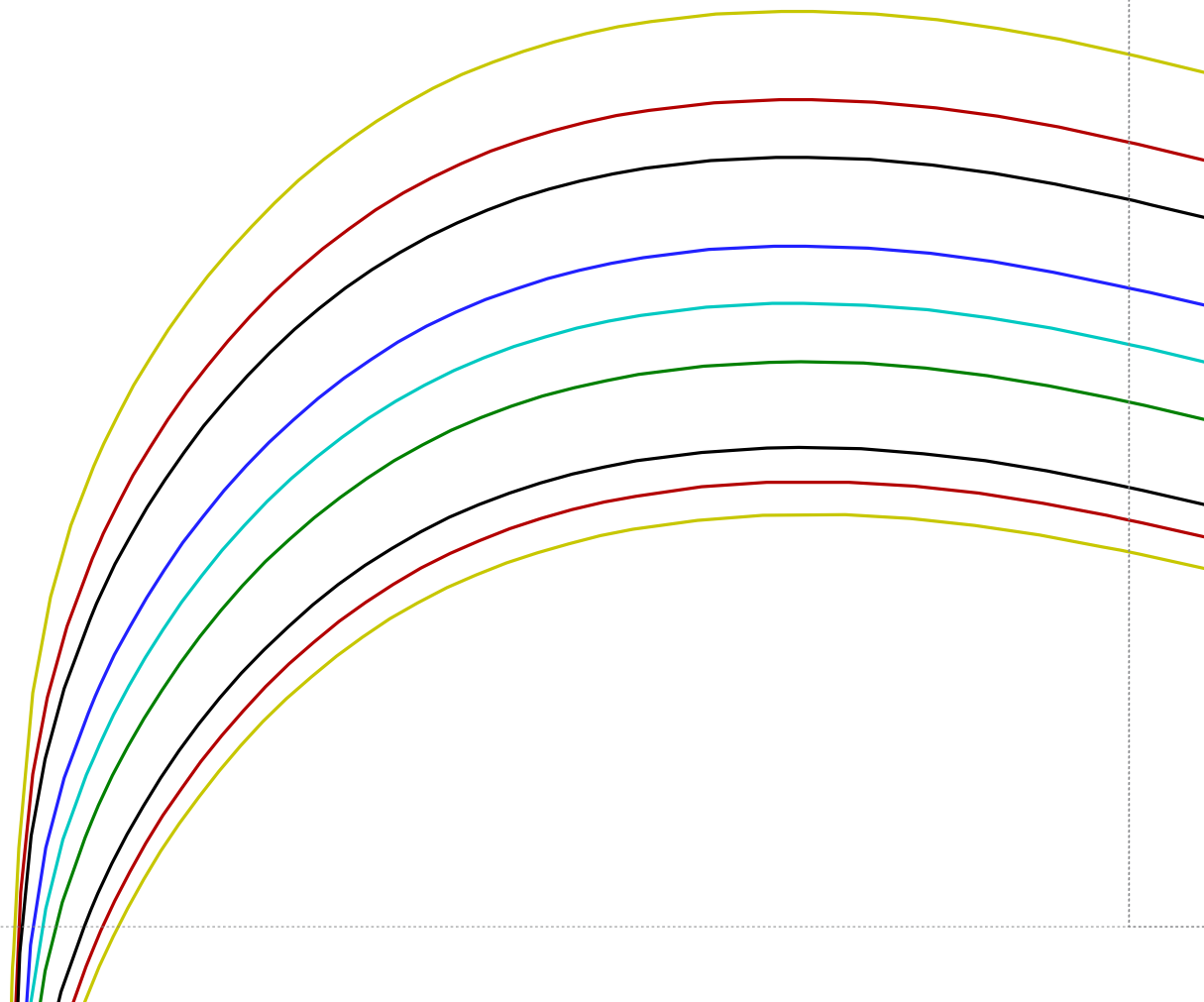
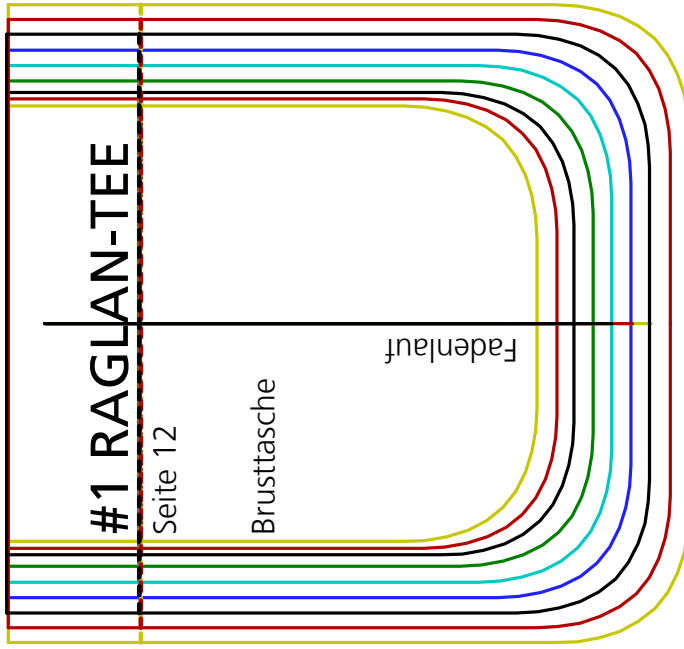
gerader Saum

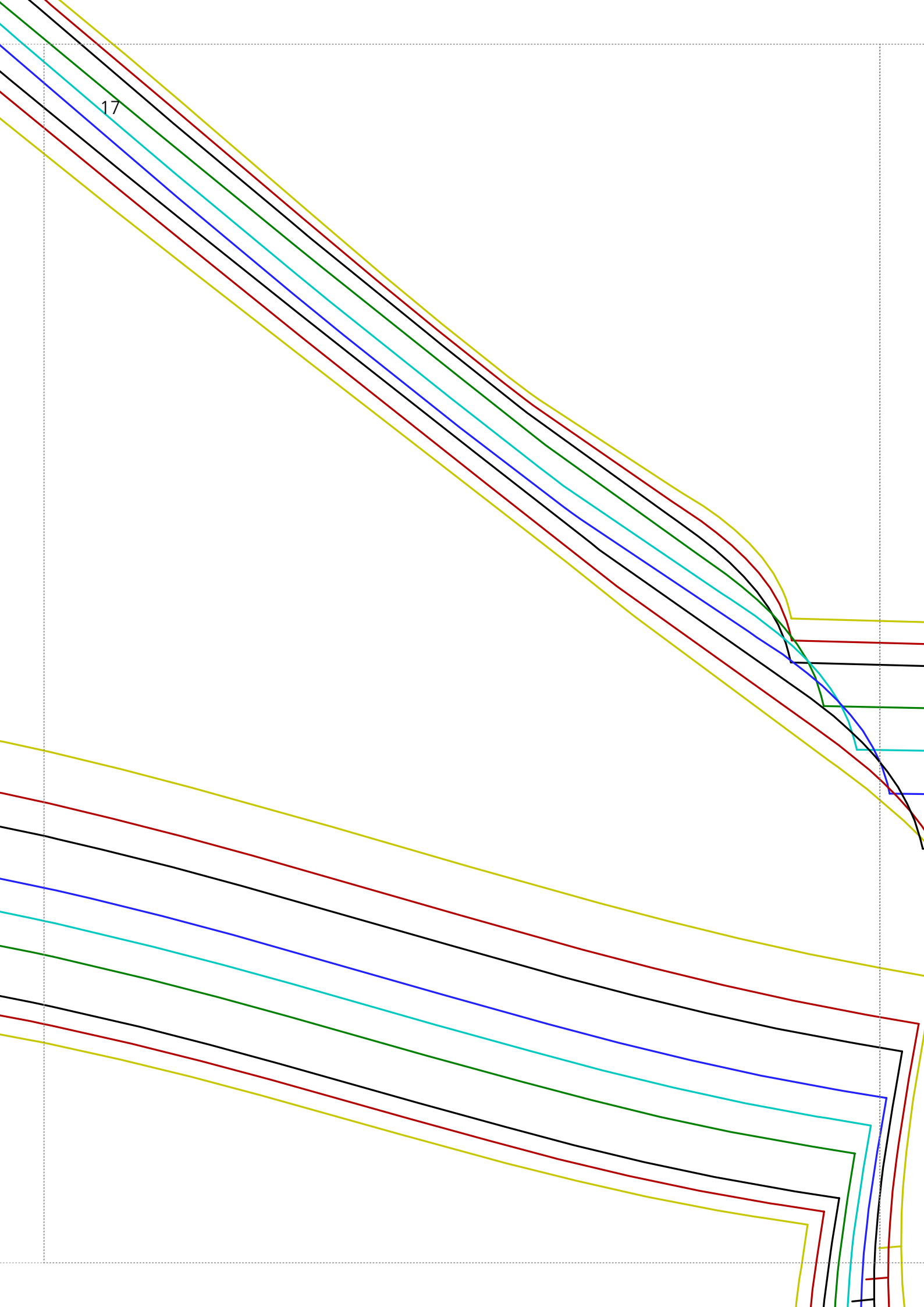
Vokuhila-Saum

m







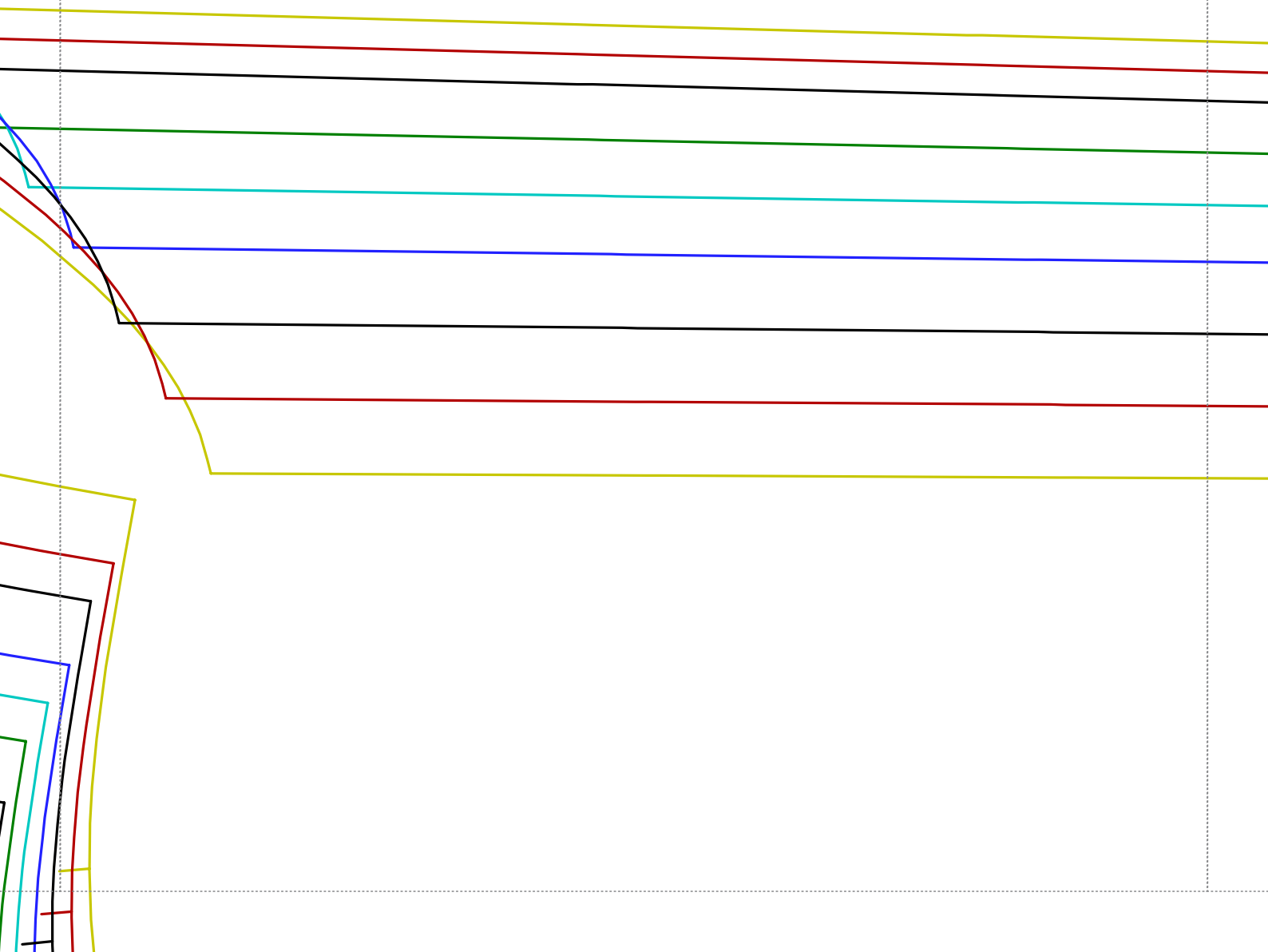


17

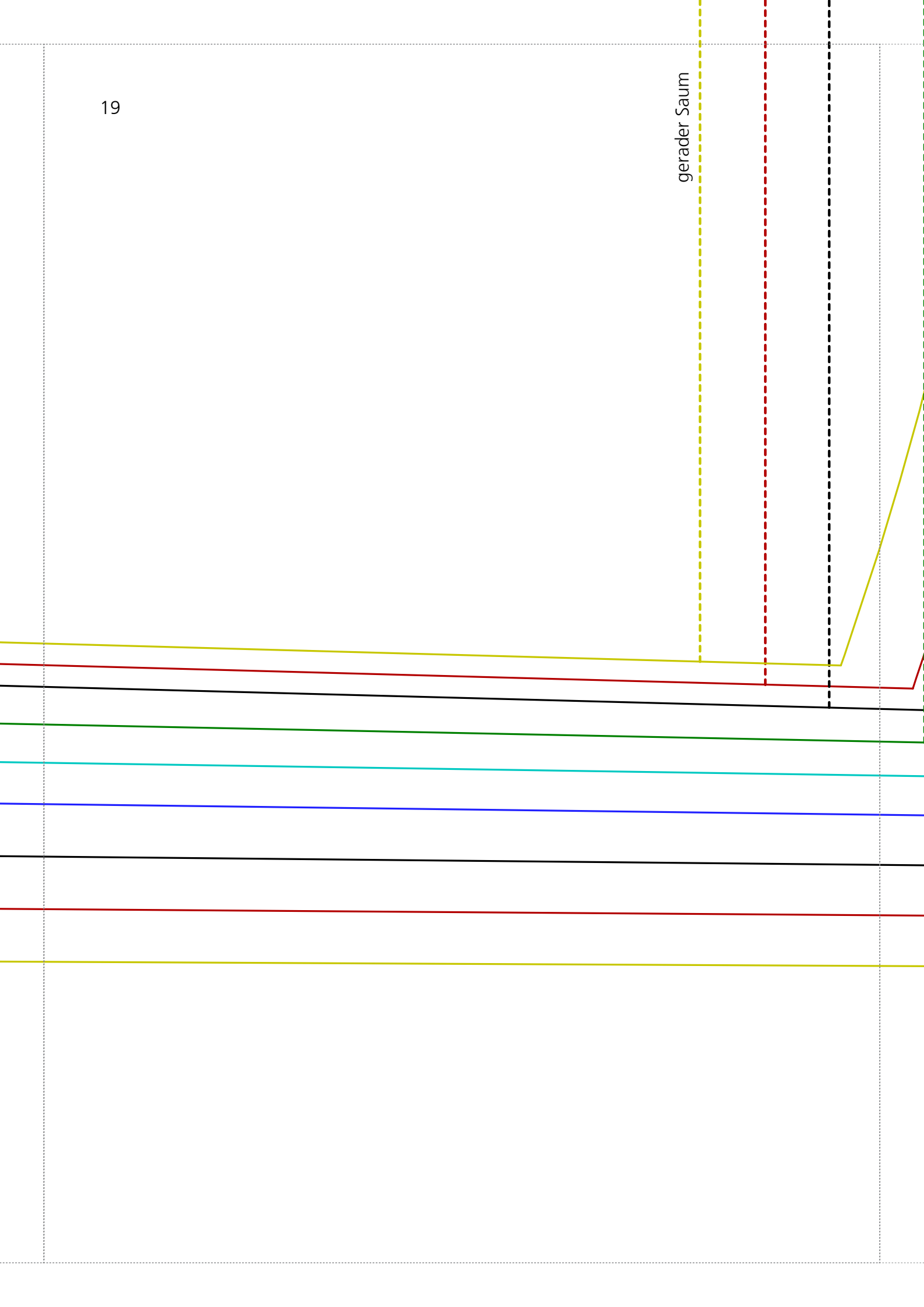
#1 RAGLAN-TEE

Seite 12

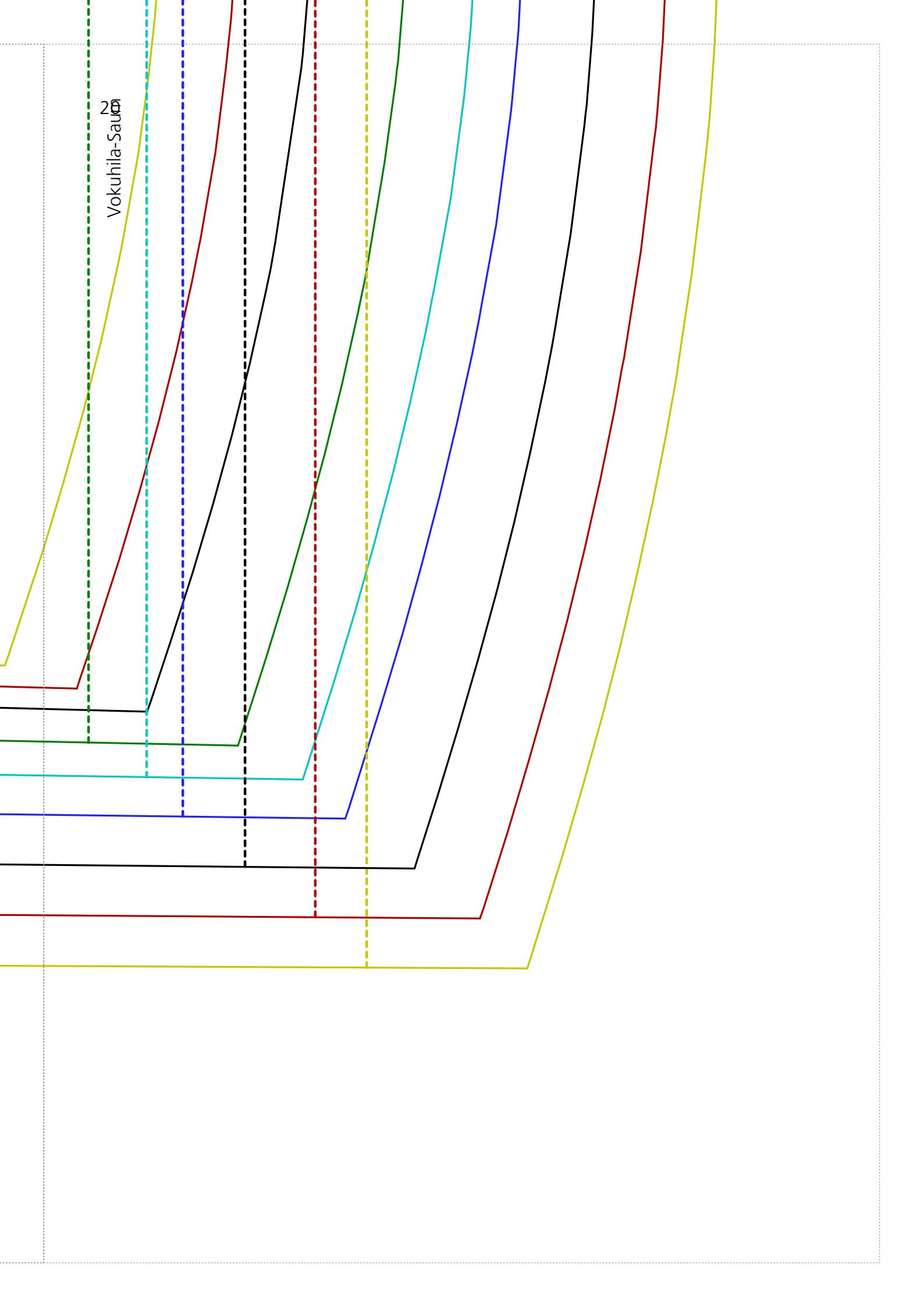
Rückenteil



gerader Saum



Vokuhila-Sauerei



#1 RAGLAN-TEE

Seite 12

Kapuze

GRÖSSE 128

GRÖSSE 134

GRÖSSE 140

GRÖSSE 146

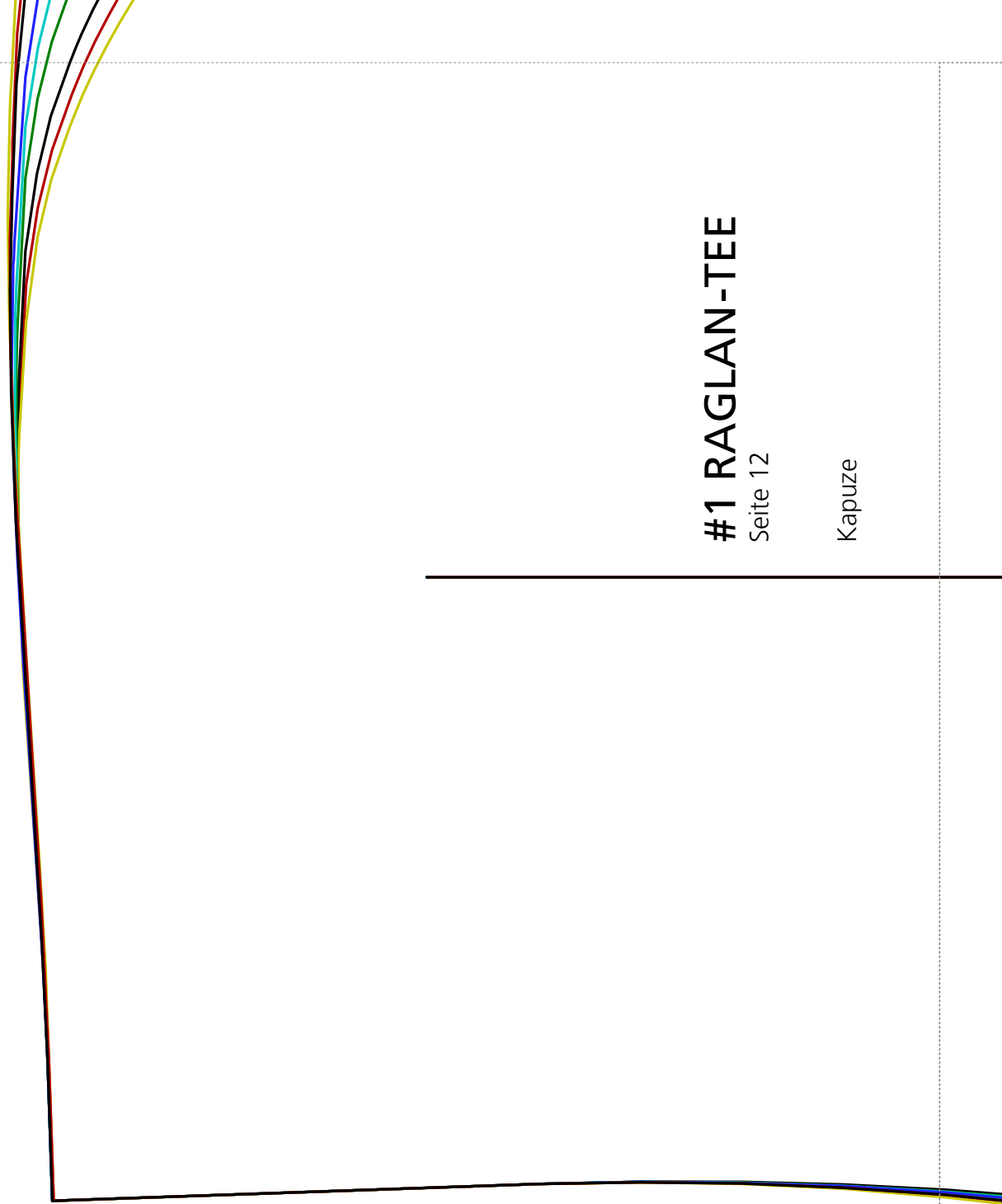
GRÖSSE 152

GRÖSSE 158

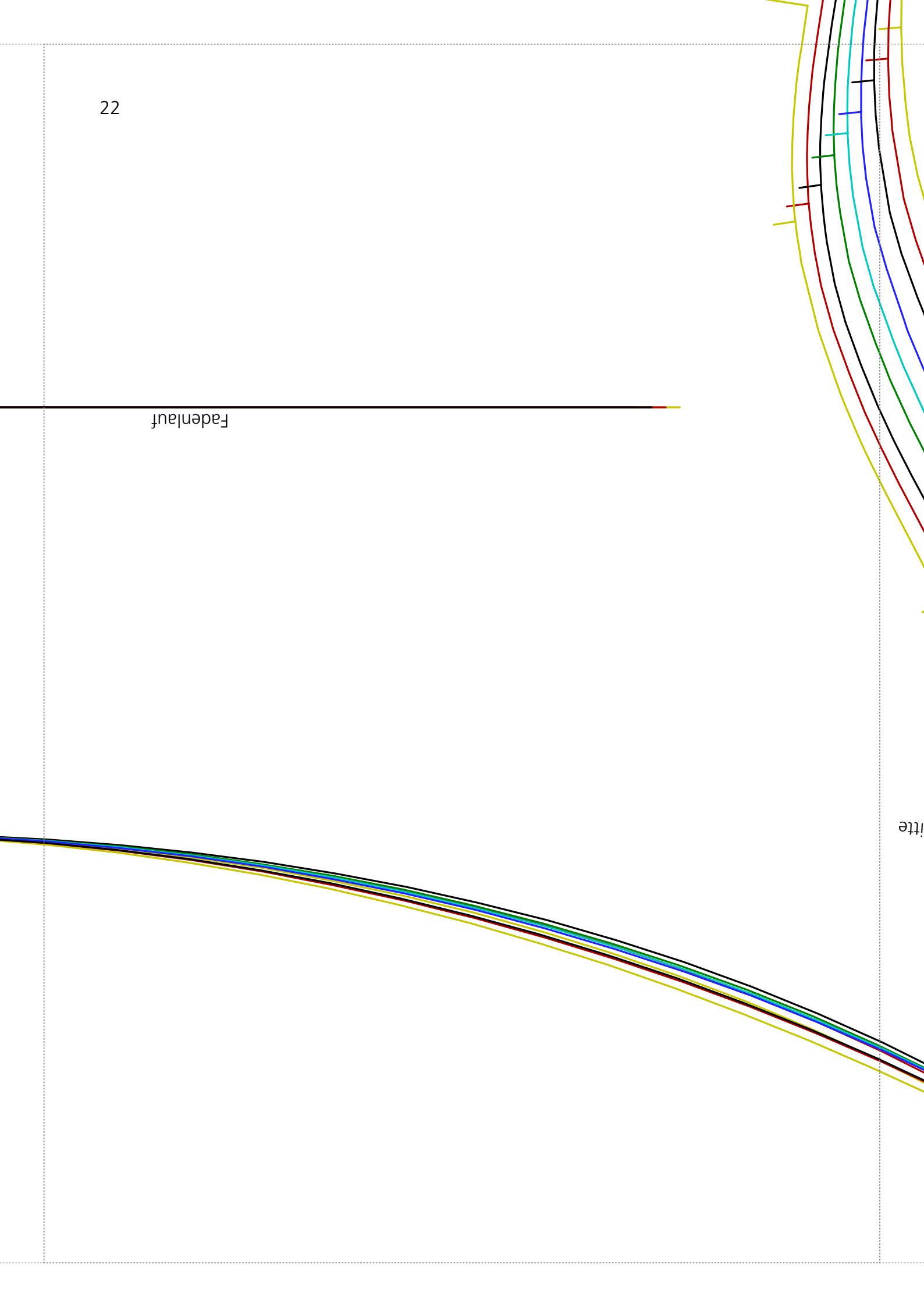
GRÖSSE 164

GRÖSSE 170

GRÖSSE 176

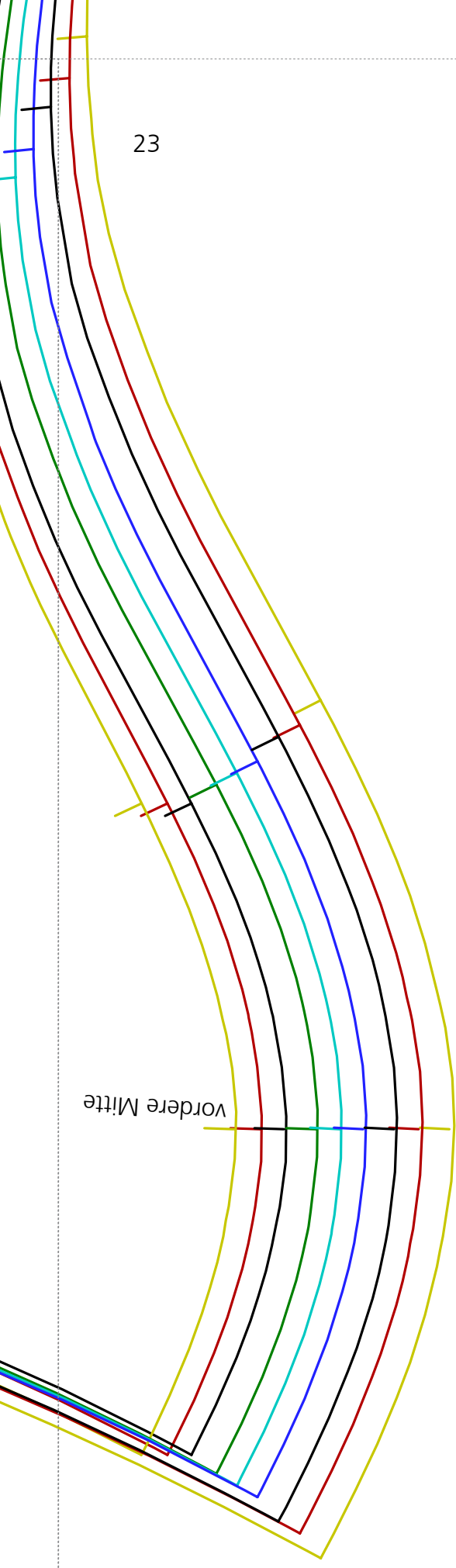


Fadenlauf



itte

23



vordere Mitte

TOPP



Diese Vorlage entstammt dem TOPP-Titel 6881

Tanja Hildebrand
Lässige Styles für Kids nähen
ISBN 978-3-7724-6881-0
<https://www.topp-kreativ.de/laessige-styles-fuer-kids-naehen-6881>

Kontrollquadrat
10x10 cm

